



The Henry Cort Community College



Course Choice Booklet 2022-2025

"Proud to offer a broad and balanced curriculum!"

ASPIRE

ACHIEVEMENT * SUPPORT * PERSEVERANCE * INDIVIDUALITY * RESPECT * EXCELLENCE

Follow us:   



The Henry Cort Community College

Hillson Drive, Fareham, Hampshire PO15 6PH

Telephone: 01329 843127 Email: enquiries@henrycort.org

www.henry-cort.hants.sch.uk

February 2022

Dear Year 8 Student

We appreciate and understand how frustrating the school closures must have been for you since starting your secondary education and you have missed a lot of classroom teaching. We are mindful that adding the options process to your workload might feel daunting, but this is a team effort we will do together. It is important now, more than ever, that you take ownership of the subjects you study and focus on your remaining years at Henry Cort.

Together, by Easter, we will need to make a decision that cannot be changed once you have started Year 9. Due to the disruption caused by the pandemic, we will use the first half term of Year 9 as a pathway into Key Stage 4 and you may be allowed, in exceptional cases, to transfer to other subjects if that is right for you. **Please note that this will still require approval and, once timetabled, the availability of other courses will be limited.**

As you move from Key Stage 3 to Key Stage 4, you will be taking more responsibility for your learning and your future. What you study here will stay with you once you have left Henry Cort and will impact the opportunities you have at college and in future career(s). The decision should be taken seriously and requires maturity.

The options process allows you to pick over a third of your timetable but you will continue to take compulsory subjects at GCSE level. You will get to choose three subjects from a wide range of options. Most of the 18 free choice subjects will be familiar to you and some will be new. This course choice booklet, your options assembly, YouTube promotional videos and the virtual information evening are designed to give you all you need to help make the best choices.

It is normal at this point not to be totally certain what you want, so it is important that you read this booklet carefully and speak with your parents/carers and teachers. If you are already thinking of a career path, talk to Mrs Connachie who will be happy to help.

The choices have to be right for you, so think about the subjects you need, enjoy or might interest you and not what your friends want, or what your favourite teacher teaches.

This booklet has two sections:

- The first section entitled: **Guidance for Students and Parents** provides guidance on the option process and key issues that affect the choices that you make.
- The second section entitled: **Course Information** provides a detailed outline of the course syllabuses for 2022-2025.

You deserve to be successful. Aim high, choose wisely and work hard.

Yours sincerely

Mr T Mitchell
Assistant Principal

PRINCIPAL: Ms C Cabbage BSc (Hons), Dip Ed, MBA, CMgr FCMl

SENIOR LEADERSHIP: Mrs L Turvey LLB (Hons), MA, Mr T Mitchell BSc (Hons), MSc, Mr B Parker BA (Hons), Ms L Ferrier BA (Hons), Miss C Gudgeon BA (Hons), Mrs K Cook BA (Hons), ADSBM

ASPIRE

ACHIEVEMENT * SUPPORT * PERSEVERANCE * INDIVIDUALITY * RESPECT * EXCELLENCE

Follow us:   



SECTION 1: GUIDANCE FOR STUDENTS AND PARENTS	4
Introduction	4
Core/optional curriculum	6
Information, advice, guidance and course choice timeline	7
 SECTION 2: COURSE INFORMATION	 9
Compulsory subjects	10
English language and English literature	10
Mathematics	11
Triple science: biology, chemistry and physics	12
Health and fitness	13
Religious studies	14
Optional subjects	
Fine art	15
Business studies	16
Citizenship studies	17
Computer science	18
Creative & Performing Arts	19
Creative iMedia	20
Dance	21
Digital information technology	22
Design and technology	23
Geography	24
History	25
Hospitality and catering	26
Modern foreign languages: French, German and Spanish	27
Music	38
Photography	29
Textile design	30

INTRODUCTION

The Henry Cort Community College aims to provide a broad and balanced curriculum which engages and challenges our students so that they achieve the best possible range of qualifications to enable their future aspirations to be fulfilled. The curriculum is designed to offer students a diverse and coherent choice of courses and learning experiences so that they develop skills and knowledge that remain with them long after examinations.

This is so that you leave school as confident and independent life-long learners, equipped with the transferable skills needed to thrive in a changing world.

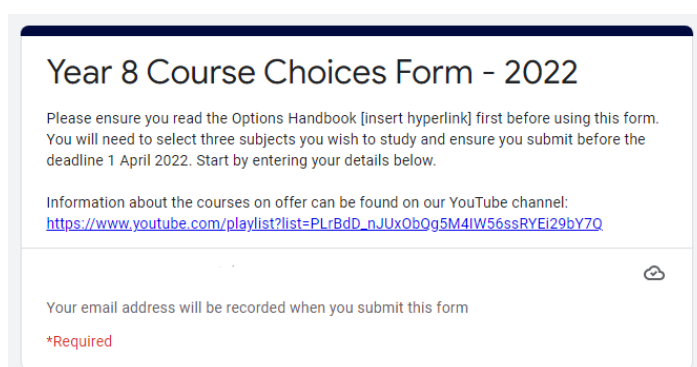
CHOICE INFORMATION EVENING

This will be taking place on **Monday 7 March 2022**. This evening will include a presentation about the Course Choice process and there will be an opportunity to talk to the Senior Leadership Team and Faculty Leaders afterwards. This can then be followed up with subject teachers at the subject consultation meetings which are taking place **Tuesday 8 March - Thursday 10 March 2022**.

COMPLETING THE COURSE CHOICE FORM

All the information you need is provided on the online form - [Year 8 Course Choice form 2022](#). **Please read and follow the instructions carefully**

Forms should be completed and submitted no later than **Friday 1 April 2022**.



COURSE OFFERS

We offer a 'free choice' of subjects at The Henry Cort Community College and have done so for a number of years now with a very high success rate of students getting their choices. We do not restrict students to a set pathway; however, we do strongly encourage students take Ebacc subjects (more on this later).

We try to ensure that you all students get their first choice; however, **I wish to make it very clear that in some cases it will not be possible to meet the combination of subjects chosen.** Whether or not we can meet your first choice depends on:

1. Number of students that choose each option – as we can only offer a limited number of places in any given subject due to staffing considerations or indeed if too few choose the subject it may be unavailable and will not run.
2. Attitude to Learning (ATL) and attainment in the subject – if there is a history of lack of engagement in the subject then you may be questioned as to the reasons behind your choice.
3. In some cases, the combination of subjects chosen by a small number of students will not work due to their final place on the timetable. In these cases, you will be advised about the problem and given a chance to reconsider your choices.

CORE CURRICULUM – COMPULSORY

You will follow a core curriculum to the end of Year 11. These courses and the qualifications which they lead to are shown in the table below. The core curriculum gives you the opportunity of achieving up to 8 GCSEs or equivalent. Detailed information about the core courses is given in Section 2.

All students will study separate (triple) science syllabus which will lead to three GCSEs in biology, chemistry and physics, taught by specialist teachers. However, depending on your progress up to the end of Year 10, this may be reduced to combined science in Year 11 at the discretion of the college.

SUBJECT	HOURS PER FORTNIGHT			Number of qualifications
	Year 9	Year 10	Year 11	
English	7	7	9	1 Language 1 Literature
Maths	7	7	8	1 GCSE
Science*	9	9	9	3 GCSEs (<i>biology, chemistry & physics</i>)
PE	5	5	4	1 NCFE
RE	5	5	-	1 GCSE (<i>taken at the end of year 10</i>)
PSHE/SRE	2	2	2	0 (<i>covered in PDL Wednesday sessions</i>)
Option choices	5	5	6	1 GCSE or equivalent

*Some students may be moved to Combined Science = 2 GCSE's after assessment in year 10.

OPTIONAL CURRICULUM – COURSES

You will get to make **three** choices from a wide range of courses found in **Section 2 - Course Information**. You are strongly encouraged to continue a language and humanities subject (these are Ebacc subjects). If you do not wish to study a language and/or humanities subject, please discuss this first with your teacher(s) at the subject consultation meetings.

In order to get permission to drop these subjects, **you must request a referral in the referral section of the online form**.

Once you have entered your details, you will be led through a series of pages in order to make your selection. Please see the following screen shots to help you understand each section.

Humanities choice

On this page you will need to select your 1st option. All students are strongly encouraged to choose a humanities subject. If you do not want to you will need to request a referral, and explain why. This will be reviewed by the college, who will make the final decision.

I wish to study... *

- ☐ Geography <https://youtu.be/G-1oN5BbDbI>
- ☐ History https://youtu.be/bN_zwclUt3s
- ☒ Request a referral

If you select a referral you will be taken through to a separate referral page on which you will need to explain why you want to drop a humanity. These will be used by the Head of Faculty and Mr Mitchell who will make the final decision and either approve or reject the request.

I wish to request a referral from humanities because... *

Please note students that do not write to explain why, will not be considered.

My alternate subject is... *

Please select one subject from the list below you would prefer to do instead of history or geography.

- ☐ Business Studies <https://youtu.be/ORIT3EJsHqk>
- ☐ Citizenship <https://youtu.be/505nAa0E03E>
- ☐ Computer Science <https://youtu.be/2azoCADJSVF>
- ☐ Creative Media Production (Btec Technical Award) <https://youtu.be/G0Hm1yUBWc>
- ☐ Creative & Performing Arts (RSL technical award) https://youtu.be/b_Prl.nGP5gq
- ☐ Dance <https://youtu.be/M-HFInhKqps>
- ☒ Design & Technology *** <https://youtu.be/Agy9A0DANYI>
- ☐ Digital Information Technology (Btec Technical Award) <https://youtu.be/gma3szGevvW>
- ☐ Fine Art*** <https://youtu.be/HG-MY-An260>
- ☐ French* <https://youtu.be/V4tswLUbUlk>
- ☐ German* <https://youtu.be/V4tswLUbUlk>
- ☐ Hospitality and Catering (WJEC Vocational Award) <https://youtu.be/xMHJ2SKmwlw>
- ☐ Music (RSL Technical Award) <https://youtu.be/5H2kAH6pOZo>
- ☐ Spanish* <https://youtu.be/V4tswLUbUlk>
- ☐ Textiles** <https://youtu.be/mSoeTFu8t00>

On this page you will also need to select what you want to study instead. A link to each course is provided in the online form. And there are some rules to consider.

- * You will get another chance to select a language but students may choose as many as they wish
- ** Students cannot take both Fine Art & Textiles because they both count as the same GCSE.
- *** Some students may wish to study DT as an after college additional course, instead of picking it here, if so please speak to Mr Mitchell.

The same process is repeated with your 2nd language choice.

Final choice

In the final section you will need to select your final option choice and you will also be asked to select a reserve just in case the college is not able to timetable what you have chosen, or cannot run the course. Last year 97% of students got their first choice.

We will try and give you your preference, but this cannot be guaranteed, and we may need to use the reserve subject choice.

During the Year 8 Subject Consultation meetings you will undoubtedly have discussions with your parents/carers and subject teachers about your suitability for Key Stage 4 courses. I have included a list of relevant key staff who you may also want to speak to. In the meantime, you should be proactive in discussing your course choices with your parents/carers and seek advice and guidance where appropriate.

STAFF ROLE	AREA OF ADVICE
Tutor	<ul style="list-style-type: none"> • Overview of students' areas of strength • Course choice process
Subject Teachers/Faculty Leaders	<ul style="list-style-type: none"> • More detailed course information • Students' suitability for a course based on AtL
Mr Mitchell (Assistant Principal – Curriculum and Assessment)	<ul style="list-style-type: none"> • Course choice process and timetable queries • Technical questions and college policy
Mrs Connochie / Miss Gudgeon (Careers)	<ul style="list-style-type: none"> • Careers advice and guidance incl. appointments • Work Experience
Mr Parker (Assistant Principal / SENDCo)	<ul style="list-style-type: none"> • Advice for students with SEN

TIMELINE FOR THE COURSE CHOICE PROCESS

A careful sequence of events has been planned so that you make well informed decisions and choose the best curriculum for you.



Any issues should be initially discussed with your tutor who will then liaise with Mr Mitchell.

CAREERS INFORMATION ADVICE AND GUIDANCE

Careers information advice and guidance (CIAG) occurs throughout Years 7 to 11. CIAG helps you to understand the world of work and its changing nature, how to obtain relevant information and to explore career pathways for post-16 and beyond. You are now required to follow one of the following post-16 pathways until the age of 18:

- further education (college)
- apprenticeships
- work with training
- or voluntary work with training

These pathways are explained in detail during appropriate sessions. We have a range of resources available in the library to support your interests.

Our Careers Adviser, Michelle Hart, is available in college on Tuesdays and is based in the Pastoral Office next to Mrs Connochie's office. She operates an appointment system, however, you are encouraged to drop in at break or lunch for information, advice or to arrange an appointment. Mrs Connochie can also be seen for any additional careers advice. You will get the opportunity to attend a careers fayre during your PDL session on **Wednesday 9 March 2022**.

It is important to think of the next stages of your education after Henry Cort. Make sure you do your research about course requirements for college and university. If you and your parents/carers wish to explore about specific careers you may benefit from visiting:

- <https://www.henry-cort.hants.sch.uk/curriculum/careers>
- <https://www.careercompanion.co.uk/studentcompanion#12>
- <https://nationalcareersservice.direct.gov.uk>

ALTERNATIVE PROVISION

The Henry Cort Community College has a long tradition of providing alternative courses for students who find the normal curriculum too challenging. We work with numerous local colleges and training providers whose courses have offered an alternative way to learn and have supported the student's development.

At present we are not in the position to provide any details of courses that might be available but if you feel this is something that might be better for you, please speak to Mr Mitchell who will speak to students we believe would benefit from alternatives to the normal curriculum.

While other students might have a clear career focus in mind, we would, in certain circumstances, try to place you on an appropriate course to support your aspiration. In all circumstances, we will work with you and your parents.

Dropping a course to gain "free" periods is not an option.



Course Information (2022-2025)

COMPULSORY CORE SUBJECTS

- English language and English literature
- Mathematics
- Triple science (*depending on progress this may be reduced to combined science at the start of Year 11*)
- PE health and fitness (*to be completed at the end of year 10 or at the latest by the start of year 11*)
- Religious studies (*to be completed at the end of year 10*)
- Information Technology (*students will have one lesson in IT a week*)

In addition to the above compulsory subjects, you are strongly encouraged to pick a language and humanities subject. If you do not wish to study a language and/or humanities subject, please ensure that you discuss this first with your teacher(s) at the subject consultation meetings on Thursday 5 March.

OPTIONAL SUBJECTS

** You cannot study both subjects as they are both the same with some different endorsements*
Permission to drop (refer) a language/humanities must be requested in writing

To be completed at the end of **Year 11**:

- | | | |
|--------------------------------|----------------------------------|----------------------------|
| • Fine art * | • Dance | • History # |
| • Business studies | • Design and technology | • Hospitality and catering |
| • Citizenship studies | • Digital information technology | • Music |
| • Computer science | • French # | • Photography |
| • Creative and Performing Arts | • Geography # | • Spanish # |
| • Creative iMedia | • German | • Textiles design * |

NB: The subjects studied will be dependent on their approval by the Department of Education in May/June 2022. Any qualifications that are deemed not suitable will be replaced by an alternative and you will be informed.

SUBJECT GUIDE

These allow you to compare the subjects according to their demands – try to balance their requirements to your skills and abilities. Each subject has been rated by their teachers according to a range of factors:

- ★ Literacy - *level of writing and reading required*
- ★ Numeracy - *level of maths application involved*
- ★ Communications - *need to explain and share your thoughts and ideas with others*
- ★ Creativity - *need to think for yourself creatively*
- ★ Practical - *level of hands on involvement required*
- ★ Group work - *working with others, being both dependent and dependable*

Course Choice Guide	
Literacy	*****
Numeracy	*
Communications	*****
Creativity	*****
Practical	****
Group Work	****
Teaching, Learning & Assessment	
Examinations (4)	100%

AQA ENGLISH LANGUAGE (8700) AND ENGLISH LITERATURE (8702)



Full course details can be found at www.aqa.org.uk

Course Choice Guide

Literacy	*****
Numeracy	*
Communications	*****
Creativity	*****
Practical	****
Group Work	****
<u>Teaching, Learning & Assessment</u>	
Examinations (4)	100%

SUMMARY OF COURSE

As a core subject, English GCSE is required by nearly all employers, training programmes and providers of further education. We provide a wide experience of different types of activity, including analysing texts and films, debating and discussing and produce a range of different pieces of writing.

You are encouraged to use your own ideas and become independent learners.

The new syllabus will allow you to study a wide range of fiction and non-fiction texts from 19th, 20th and 21st Centuries. Marks for the written exams are given for technical accuracy (spelling, grammar and punctuation):

- English language – 20%
- English literature – 5%.

WHAT IT CAN LEAD TO AT COLLEGE AND BEYOND

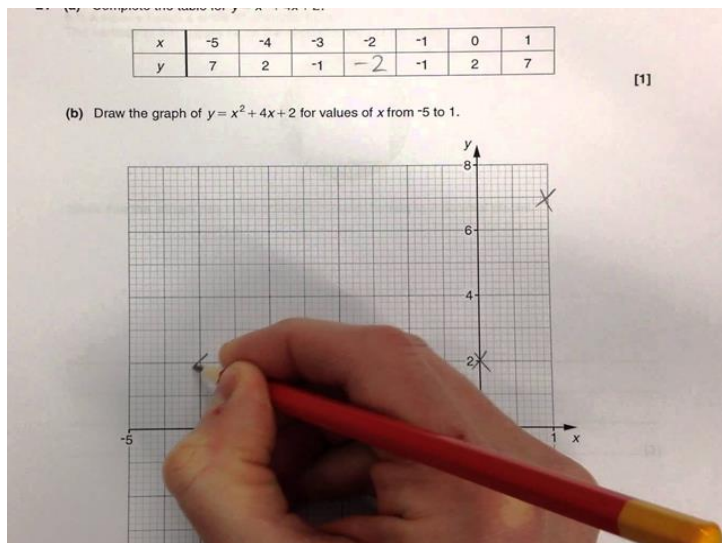
Success in English language will, of course, lay the foundations for your work in English language or literature at AS level. The listening, speaking, reading and writing skills you will develop will also be useful across a range of arts, humanities and social science subjects, the evaluation skills you will develop will be useful in each and every subject both at sixth form, college or in higher education.

EXTRA-CURRICULAR COMMITMENT REQUIREMENTS AND ADDITIONAL INFORMATION

You will be expected to complete regular study skill, reading or writing homework.

FOR MORE INFORMATION, PLEASE CONTACT MR PAYNE

OCR MATHEMATICS (J560)



Course Choice Guide

Literacy	***
Numeracy	*****
Communications	***
Creativity	***
Practical	**
Group Work	*

Teaching, Learning & Assessment

Examinations (3)	100%
------------------	------

Full course details can be found at www.ocr.org.uk/qualifications/gcse-mathematics-j560-from-2015

SUMMARY OF COURSE

Mathematics is offered at two levels of entry; higher and foundation. If you wish to follow mathematics beyond Key Stage 4 you must study higher. The course covers all aspects of mathematics and is assessed by a terminal examination made up of three papers. These are 2 x calculator and 1 x non-calculator. In addition to this, you are assessed each half term to ensure progress is maintained.

At GCSE we build upon the work covered at Key Stage 3 and prepare you to be efficient in the use of mathematics in real life applications. In the mathematics faculty we embrace new technologies but these are underpinned by the traditional approaches to the subject that are required in the wider world. A successful mathematician will be able to show organisation, logic and ordering skills in order to break a problem down to smaller, more manageable tasks.

WHAT IT CAN LEAD TO AT COLLEGE AND BEYOND

Mathematics is required for practically every job that you can imagine. Most job advertisements will request mathematics at a pass grade at GCSE. The skills developed will demonstrate that problems can be identified and broken down.

As an A level subject it is widely considered to be the most marketable; opening doors into careers in ICT, law, engineering, medicine, science and business. The skills that you will develop are universal and can be implemented in many areas.

EXTRA-CURRICULAR COMMITMENT REQUIREMENTS AND ADDITIONAL INFORMATION

You will be expected to undertake independent review and revision of the topics studied throughout the course. You will be expected to complete a weekly homework of up to 1 hour in length. In addition, you will be asked to practice basic skills using the ICT available.

FOR MORE INFORMATION, PLEASE CONTACT MR SMITH

AQA TRIPLE SCIENCE: BIOLOGY (8461), CHEMISTRY (8462), PHYSICS (8463)



Full course details can be found at
<https://www.aqa.org.uk/subjects/science/gcse>

Course Choice Guide

Literacy	****
Numeracy	****
Communications	****
Creativity	**
Practical	****
Group Work	**

Teaching, Learning & Assessment

Examinations (6)	100%
------------------	-------------

SUMMARY OF COURSE

You will be following the triple science course which will enable you to achieve 3 GCSEs in the science disciplines of biology, chemistry and physics. Triple science covers more content than combined science and provides a very comprehensive foundation if you intend to follow the pure sciences at A-Level or a more vocational science related course.

Assessment is terminal (at the end of year 11) and will consist of 6 exams in total (two exams in each subject area). Each exam has a 50% weighting for the GCSE and the duration of the exam is 1 hour and 45 minutes. There are 'required practical's that you will undertake throughout the course to develop scientific investigation skills as well as reinforce understanding. There are 28 practical's in total and these will be assessed as part of the terminal examination.

WHAT IT CAN LEAD TO AT COLLEGE AND BEYOND

You will be following the separate science route which is ideal if you expect to follow 'pure' science A-Levels such as biology, human biology, chemistry and physics. Potential future careers may include opportunities to work in engineering, forensic science, environmental science, veterinary science and medicine. The skills learned in science e.g. problem solving and investigational skills will be applicable in a wide range of careers and are highly valued by employers.

EXTRA-CURRICULAR COMMITMENT REQUIREMENTS AND ADDITIONAL INFORMATION

This is a demanding course and you will be expected to undertake independent review and revision of the topics studied throughout the course. There will be regular end of topic tests as well as pre-public exams (PPEs) throughout the course to prepare you for the demands of the terminal exams. Revision sessions will run throughout Year 11 and prior to other PPEs.

Some students may be moved to Combined Science = 2 GCSE's after assessment in year 10.

FOR MORE INFORMATION, PLEASE CONTACT MISS NARINDAR

NCFE LEVEL 1/2 TECHNICAL AWARD IN HEALTH AND FITNESS (603/2650/5)



Full course details can be found at

www.qualhub.co.uk/qualification-search/qualification-detail/ncfe-level-12-technical-award-in-health-and-fitness-4579

SUMMARY OF COURSE

The NCFE Level 1/2 technical award in health and fitness (603/2650/5) compliments GCSE qualifications. It is aimed at 14-16 year olds studying Key Stage 4 curriculum who are interested in the health and fitness industry sector. This qualification is designed to match the rigour and challenge of GCSE study. The qualification is graded at Level 1 pass, merit, distinction, distinction* and Level 2 pass, merit, distinction, distinction*(equivalent to GCSE grades 8.5-1).

This Level 1/2 qualification enables you to develop a significant core of knowledge and understanding in health and fitness.

At the end of the course you will understand and identify the main body systems and their functions; understand the principles of training and FITT (frequency, intensity, time, and type); explore how physical activities affect the body in the short and long term and how it leads to better mental health. You will learn to understand how relevant fitness tests can be used for specific health and skill components of fitness; understand different lifestyle analysis tools and how to apply them by creating a health and fitness programme.

WHAT IT CAN LEAD TO AT COLLEGE AND BEYOND

This course is an excellent foundation for post-16 courses in physical education and sport science related fields. It is also suitable if you are thinking about coaching or teaching related careers or sports management.

EXTRA-CURRICULAR COMMITMENT REQUIREMENTS AND ADDITIONAL INFORMATION

It may be necessary to complete additional support classes after college to ensure that units of work are completed to a good standard. We also encourage you to continue to participate in your favourite sports outside college hours.

Course Choice Guide

Literacy	****
Numeracy	**
Communications	*****
Creativity	****
Practical	****
Group Work	*****
<u>Teaching, Learning & Assessment</u>	
External Assessment	40%
Internal Assessment	60%

FOR MORE INFORMATION, PLEASE CONTACT MR PLOMER

EDUQAS RELIGIOUS EDUCATION – ROUTE A (C120P2)



Full course details can be found at

https://www.eduqas.co.uk/qualifications/religious-studies-gcse/#tab_overview

Students will study the following three components:

1. An **in-depth** study of the beliefs, teachings and practices of religion focussing on **Christianity**.
2. An **in-depth** study of the beliefs, teachings and practices of religion focussing on **Hinduism**.
3. The following religious, philosophical and ethical themes:
 - **Issues of life & death**- the origins and value of the universe and human life, abortion, euthanasia.
 - **Issues of Relationships**– relationships, sexuality, contraception, gender equality, family in the 21st century, marriage, divorce.
 - **Issues of Human Rights** - religion, violence, prejudice terrorism, protest, censorship.
 - **Issues of Good & Evil**- religion, crime, the causes of crime and punishment.

A range of religious and non-religious responses to these issues will be explored. In both parts of the course, a wide variety of teaching and learning methods are used e.g. ICT, debates, discussions, visiting speakers, videos, trips, games, individual, pair and group work.

WHAT IT CAN LEAD TO AT COLLEGE AND BEYOND

Religious Education is a subject which is desirable in today's multi-cultural world and highly regarded by employers, especially in careers which involve an emphasis on working with people e.g. Police, Law, Media, Medicine, Education and Business. It helps you develop the skills of analysis and evaluation of different points of view, empathy and the ability to view an argument from every side and the talent to debate and critically argue a given topic. It has great value as an examination subject for a variety of careers and for entry to Higher Education.

Religious Education is an 'open' exploration that will help you to understand different views of life as well as helping you to develop your own understanding of important questions. It provides a strong foundation for A Level RE, Philosophy or any social studies subject.

EXTRA-CURRICULAR COMMITMENT REQUIREMENTS AND ADDITIONAL INFORMATION

You are expected to keep up-to-date with current affairs through newspapers, television, the internet and radio.

Course Choice Guide

Literacy *****

Numeracy *

Communications ****

Creativity **

Practical

Group Work ****

Teaching, Learning & Assessment

Examinations (3) 100%

FOR MORE INFORMATION, PLEASE CONTACT MISS GUDGEON

OCR FINE ART (J171)*****NB You cannot study this and Textiles Design***

Full course details can be found at www.ocr.org.uk

Course Choice Guide

Literacy	***
Numeracy	*
Communications	***

Creativity	*****
Practical	*

Group Work**Teaching, Learning & Assessment**

Portfolio	60%
Externally set task	40%

SUMMARY OF COURSE

At Henry Cort the art department is passionate about unlocking creative potential and working to individual strengths and interests. In the fine art course, you will undertake a broad range of creative processes as well as exploring work by historical and contemporary artists and crafts people. A keen interest in all areas of art and design, plus a willingness to learn new skills are the key requirements of this course. Consider opting for the fine art course if you are eager to improve and refine painting and drawing techniques and use your own creativity and imagination. The course provides an opportunity for you to take a personal interest in why art and design matters and to be inspired and influenced by studying an exciting and stimulating course.

You are required to choose one or more area(s) of study:

- Installation
- Lens/light-based media
- Mixed-media
- Land art
- Printing
- Painting
- Sculpture

WHAT IT CAN LEAD TO AT COLLEGE AND BEYOND

GCSE art and design can be a stepping stone towards A Level art, textiles or a BTEC national diploma in similar art related subjects. This could then lead to degree courses (BA/ BA Hons) in various subject areas.

Art is so diverse that future careers can be very varied and could lead to professional artist, art teacher, illustrator, graphic designer, interior designer, print maker, fashion designer, theatre design, ceramics and many more.

EXTRA-CURRICULAR COMMITMENT REQUIREMENTS AND ADDITIONAL INFORMATION

Art is time consuming so you must be committed to finishing work in your own time. The attendance at art club and completion of homework will be expected regularly.

FOR MORE INFORMATION, PLEASE CONTACT MISS GREENSTREET

OCR BUSINESS (J204)



Full course details can be found at

<https://www.ocr.org.uk/qualifications/gcse/business-j204-from-2017/>

Course Choice Guide

Literacy	*****
Numeracy	*****
Communications	****
Creativity	***
Practical	***
Group Work	***
<u>Teaching, Learning & Assessment</u>	
Examination (2)	100%

SUMMARY OF COURSE

A GCSE in business will equip you with the skills and confidence to explore how different business situations affect decision-making. You will develop your understanding of concepts, objectives and terminology, and the impact of contemporary issues on business operations.

You will learn how to apply your knowledge and understanding to a variety of different business contexts in a dynamic and competitive environment. These include businesses ranging from small enterprises to large multinationals and businesses operating in local, national and global contexts.

You will develop an understanding of how these business contexts impact on a company's behaviour. You should be able to make decisions based on the analysis and evaluation of information provided. You should be able to recognise the use and limitations of qualitative and quantitative data in business decision making.

WHAT IT CAN LEAD TO AT COLLEGE AND BEYOND

This qualification equips you with the skills and confidence to explore how different business situations affect business decisions. The qualification will encourage you to make informed choices about a wide range of further learning opportunities and career pathways as well as develop life skills that enable you to become financially and commercially aware. The course will help you prepare for further education post-16 and for a growing number of vocational qualifications.

Whatever line of work you will ultimately find yourself entering, you will benefit since the learning on this course applies across all jobs, in all industries and better equips you to succeed in a very competitive market for jobs of the future.

EXTRA-CURRICULAR COMMITMENT REQUIREMENTS AND ADDITIONAL INFORMATION

You can attend supported sessions which run weekly after college revision periods. Extensive online self-learning material will also be available to you.

FOR MORE INFORMATION, PLEASE CONTACT MRS JONES

AQA CITIZENSHIP STUDIES (Politics and the Law) (8100)



Full course details can be found at

www.aqa.org.uk/subjects/citizenship/gcse/citizenship-studies-8100

Course Choice Guide

Literacy	*****
Numeracy	***
Communications	*****
Creativity	****
Practical	****
Group Work	*
<u>Teaching, Learning & Assessment</u>	
Examinations (2)	85%
Active Citizenship	15%
Project	

SUMMARY OF COURSE

This subject was introduced 8 years ago which has been studied enthusiastically by students leading to excellent results.

GCSE citizenship studies is a good subject to compliment many other subjects such as history, English and geography, being a broad based general subject. It will also interest those with an interest in the world around them and current affairs. The course looks at fighting for change in society, how the political and legal systems in Britain work and affect us. How the media influences us, relations between Britain, Europe and the rest of the world including conflict resolution and aid giving.

The course is immensely relevant to the world we are living in and involves issues we simply cannot ignore. This helps you develop skills such as critical thinking, decision making and collaborative working.

WHAT IT CAN LEAD TO AT COLLEGE AND BEYOND

Citizenship is a demanding subject but incredibly relevant if you want to be involved and change the world you live in. Students have gone on to study A Level citizenship, sociology, philosophy, history and geography at college.

EXTRA-CURRICULAR COMMITMENT REQUIREMENTS AND ADDITIONAL INFORMATION

You should attend supported sessions that run weekly after college as well as specific revision sessions. It is essential that you keep up with current affairs.

FOR MORE INFORMATION, PLEASE CONTACT MISS GUDGEON

OCR COMPUTER SCIENCE (J276)



Full course details can be found at

<https://www.ocr.org.uk/qualifications/gcse/computer-science-j277-from-2020/>

SUMMARY OF COURSE

The GCSE in computer science is engaging and practical, encouraging creativity and problem solving. It encourages you to develop your understanding and application of the core concepts in computer science. You will also analyse problems in computational terms and devise creative solutions by designing, writing, testing and evaluating programs.

The course introduces you to the central processing unit (CPU), computer memory and storage, wired and wireless networks, network topologies, system security and system software. It also looks at ethical, legal, cultural and environmental concerns associated with computer science.

You will also develop skills and understanding in computational thinking: algorithms, programming techniques, producing robust programs, computational logic, translators and data representation.

WHAT IT CAN LEAD TO AT COLLEGE AND BEYOND

This course can help you prepare for further and higher education. It prepares you for relevant academic and vocational studies post-16.

Computational thinking is at the heart of the GCSE course and the skills learned will support many other disciplines in further education or the workplace. Problem solving techniques applied to programming are similarly useful, especially in many STEM subjects across the board. Practical skills learned over the course will also boost your digital literacy skills and support you in any field after secondary school.

EXTRA-CURRICULAR COMMITMENT REQUIREMENTS AND ADDITIONAL INFORMATION

You should attend supported sessions that run weekly after college and specific revision sessions.

Course Choice Guide

Literacy	*****
Numeracy	*****
Communications	*****
Creativity	***
Practical	****
Group Work	**

Teaching, Learning & Assessment

Examination (2)	100%
-----------------	------

FOR MORE INFORMATION, PLEASE CONTACT MR SMITH

RSL LEVEL 1/2 CERTIFICATE for Performing Arts Practitioners (Acting Pathway)



Full course details can be found at
www.rslawards.com

SUMMARY OF COURSE

At Henry Cort the drama department is passionate about giving students the opportunity to be involved in creating and performing live theatre. As part of the course, you will develop these skills by producing script work and devised dramatic performance. You will develop an appreciation for a wide variety of different styles and genres which will enhance the work you create. This course focuses on your practical performance skills asking you to plan, produce, perform and evaluate your work. This is an exciting course for those students passionate about drama who may or may not wish to study drama at a later date.

WHAT IT CAN LEAD TO AT COLLEGE AND BEYOND

If you intend to continue your education post-16, it offers a solid grounding for A Level drama, which is recognised and accepted by the majority of universities and colleges. It also supports progression to study a Level 3 RSL award/ BTEC Level 3 in drama / performing arts.

As well as the obvious career opportunities in the theatre, radio, film and television broadcasting, the course can be relevant to a variety of jobs linked with communications e.g., sales, public relations, social work, teaching, law, journalism. Drama is an excellent subject to develop a wide range of soft and transferable skills from team work to public speaking and presentation skills

EXTRA-CURRICULAR COMMITMENT REQUIREMENTS AND ADDITIONAL INFORMATION

You will benefit from taking part in additional performances, either externally or in college. You are also expected to rehearse practical work after college a minimum of once a week. Good attendance is essential for KS4 drama as all practical work involves working as part of a group and you will let your partners down if you do not attend

Course Choice Guide

Literacy	****
Numeracy	*
Communications	*****
Creativity	*****
Practical	*****
Group Work	*****

Teaching, Learning & Assessment

Internal Assessment	60%
Performing Arts Knowledge	
Skill Development	
External Assessment	
Live Performance (Acting)	40%

FOR MORE INFORMATION, PLEASE CONTACT MR CHALLEN

OCR CREATIVE iMEDIA Level 1/Level 2 (J834)



Full course details can be found at:

<https://ocr.org.uk/qualifications/cambridge-nationals/creative-imedia-level-1-2-j834/>

SUMMARY OF COURSE

Our Cambridge National in Creative iMedia will inspire and equip students with the confidence to use skills that are relevant to the digital media sector and more widely. This qualification will help students to develop: an understanding of media codes and conventions which can be appropriately applied when producing digital media products; skills used to design, plan and create digital media products that are appropriate for defined target audiences and meet client requirements. They'll design, plan, create and review digital media products to meet client and target audience demands.

You will study 2 mandatory units and choose 1 optional unit. The two mandatory units are:

- Creative iMedia in the media industry
- Visual identity and digital graphics

There are 5 optional units to choose from, Characters and comics; Animation and audio; Interactive digital media; Visual imaging; Digital games

WHAT IT CAN LEAD TO AT COLLEGE AND BEYOND

The knowledge and skills you develop will help you to progress onto further study in the media industry. This may be other vocational qualifications including the Level 2 or Level 3 OCR Cambridge Technical in Digital Media and/or Information Technology; the T Level Qualification in Digital Production Design and Development or Media, Broadcast and Production; or the Media and Broadcast Assistant Pathway Apprenticeship. The qualification also helps to develop other transferable skills including creative thinking, digital presentation, planning and problem solving that will be valuable in other life and work situations.

EXTRA-CURRICULAR COMMITMENT REQUIREMENTS AND ADDITIONAL INFORMATION

You should attend supported sessions which run weekly after college, as well as specific revision sessions.

- Henry Cort reserves the right to review the number of students selecting this course as there are significant overlaps with content of Digital Information Technology. In the event that this course is oversubscribed, students may be allocated the Digital Information technology course instead.

Course Choice Guide

Literacy	*****
Numeracy	****
Communications	*****
Creativity	****
Practical	*****
Group Work	***

Teaching, Learning & Assessment

External assessment (1)	40%
NEA - Non examined assessment (2)	60%

FOR MORE INFORMATION, PLEASE CONTACT MR SMITH

AQA DANCE (8236)



Full course details can be found at www.aqa.org

Course Choice Guide

Literacy	***
Numeracy	*
Communications	****
Creativity	*****
Practical	*****
Group Work	****
Teaching, Learning & Assessment	
Examination	40%
Performance	30%
Choreography	30%

SUMMARY OF COURSE

During this course you will have the opportunity to study and experience the prime skills, techniques and creative aspects of the art of being a dancer. A predominately practical based course, the dance GCSE will cover a range of skills from choreography to performance.

You will experience contemporary technique and perform in not only a group dance but also two solo set dances. You will learn and develop your skills as a choreographer and as part of your coursework, create a group dance.

You will support your practical understanding of the key elements of dance through analysing professional choreographers, as well as deepening your knowledge of the dancers' body, nutrition and aspects of health and safety. These will be formalised as part of a written examination at the end of the course.

WHAT IT CAN LEAD TO AT COLLEGE AND BEYOND

If you wish to study dance or performing arts further, local colleges offer A Level and BTEC courses.

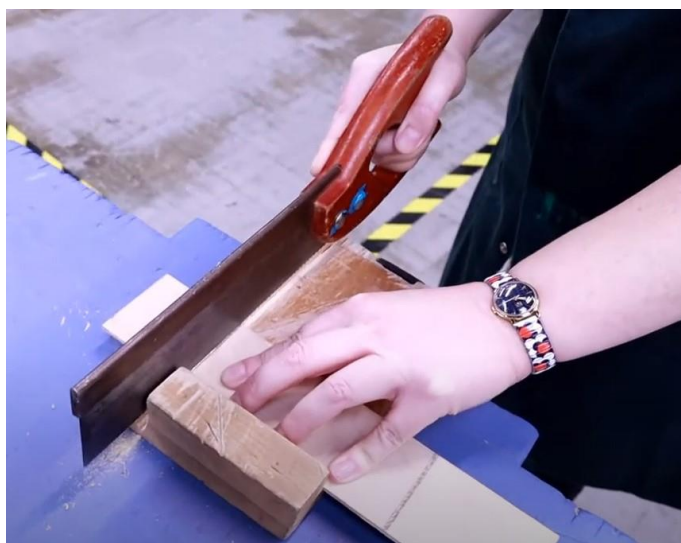
If you choose not to pursue the course to a higher level, having this course on your CV will show employers not just your creative side but that you have a proven ability to self-manage, organise events, show commitment and work effectively as part of a team.

EXTRA-CURRICULAR COMMITMENT REQUIREMENTS AND ADDITIONAL INFORMATION

You will be expected to study/rehearse in your own time (after college) to prepare for the performance and choreography assessments. You will also need to be confident in performing and be able to lead choreography tasks well. There is also an expectation that students will be involved in a creative arts production, such as school performances, and the Arts festival.

FOR MORE INFORMATION, PLEASE CONTACT MRS WARNER

AQA DESIGN AND TECHNOLOGY (8552)



Full course details can be found at

<http://www.aqa.org.uk/subjects/design-and-technology/gcse/design-and-technology-8552>

Course Choice Guide

Literacy	****
Numeracy	***
Communications	*****
Creativity	****
Practical	****
Group Work	**
Teaching, Learning & Assessment	
Examination (1)	50%
Non-Exam Assessment*	50%
*30-35 hours approx	

SUMMARY OF COURSE

Design and technology is part of everyday life and is constantly evolving. You will focus on developing practical skills and knowledge within design and technology including historical, social, cultural, environmental and economic factors. You will work creatively to design a range of products to solve problems, applying technical and practical expertise.

For your non-exam assessment, you will design and make a prototype for a client and will test and evaluate your work. This assignment will also involve you carrying out independent research and applying your mathematical and scientific knowledge in the subject. You will also be assessed in the form of a written exam at the end of the course, which has been split into three sections as follows:

- **Core Technical Principles:** A wide range of technical knowledge and understanding on timbers, polymers, textiles, metals, paper & boards, mechanical devices, electronic systems and energy sources.
- **Specialist Technical Principles:** In-depth knowledge and expertise in using timbers and polymers.
- **Designing and Making Principles:** Understanding the design process including iterative design, user-centred design, designers, companies, technical drawing, CAD/CAM, commercial manufacturing and evaluation.

WHAT IT CAN LEAD TO AT COLLEGE AND BEYOND

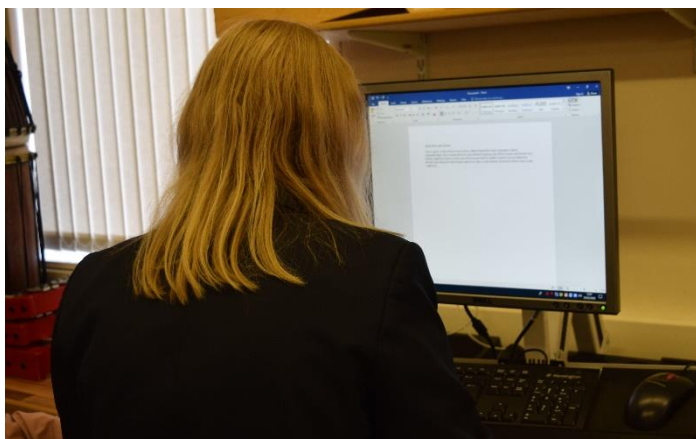
GCSE Design and Technology could lead onto academic or vocational qualifications in further education or an apprenticeship in a range of different industries; including engineering, manufacturing, product design, construction, architecture, mechanics, marketing, advertising, arts & crafts, carpentry, plumbing and electrical engineering. These are careers that involve problem solving, creativity and practical skills.

EXTRA-CURRICULAR COMMITMENT REQUIREMENTS AND ADDITIONAL INFORMATION

You will be required to use the technology facilities to keep up with the demands of the course.

FOR MORE INFORMATION, PLEASE CONTACT MISS PHILLIPS

PEARSON BTEC in DIGITAL INFORMATION TECHNOLOGY



Full course details can be found at

<https://qualifications.pearson.com/en/qualifications/btec-tech-awards/digital-information-technology-2022.html>

SUMMARY OF COURSE

This BTEC course is an introduction to the application of project planning techniques to plan, design and develop a user interface, how to collect, present and interpret data and the use of digital systems. The course complements the learning in GCSE programmes such as Computer Science.

You will have the opportunity to develop and apply knowledge and skills in the following areas: development of key skills; effective ways of working; personal management and communication; knowledge to support the effective use of skills, process and attitudes.

The course has three parts, two are internally assessed with the final part being an exam based assessment. These three components focus on the assessment of knowledge, skills and practices. These are all essential to developing a basis for progression and, therefore, **you need to achieve all components in order to achieve the qualification.**

WHAT IT CAN LEAD TO AT COLLEGE AND BEYOND

The digital sector is a major source of employment in the UK. Digital skills span all industries and almost all jobs in the UK today require employees to have a good level of digital literacy.

Students who generally achieve at Level 2 in all units across their key stage 4 learning might consider progression to: A Levels as preparation for entry to higher education in a range of subjects. Study of a vocational qualification at Level 3, such as a BTEC National in IT, which prepares learners to enter employment or apprenticeships, or to move on to higher education.

Students who generally achieve at Level 1 might consider progression to: study at Level 2 post-16 in a range of technical routes designed to lead to work, apprenticeships or to further study at Level 3 or study of IT support or digital technology through a technical certificate. This course at Level 1 can lead ultimately to employment in the digital sector.

EXTRA-CURRICULAR COMMITMENT REQUIREMENTS AND ADDITIONAL INFORMATION

You should attend supported sessions which run weekly after college, as well as specific revision sessions.

- *Henry Cort reserves the right to review the number of students selecting this course as there are significant overlaps with content of Creative iMedia. In the event that this course is oversubscribed students may be transferred to the Creative iMedia course instead.*

Course Choice Guide

Literacy	*****
Numeracy	****
Communications	*****
Creativity	****
Practical	*****
Group Work	***

Teaching, Learning & Assessment

Examination (1)
Coursework (2)

FOR MORE INFORMATION, PLEASE CONTACT MR SMITH

AQA GEOGRAPHY (8035)



Full course details can be found at

<https://www.aqa.org.uk/subjects/geography/gcse/geography-8035>

Course Choice Guide

Literacy	*****
Numeracy	
Communications	*****
Creativity	****
Practical	***
Group Work	***
	**

Teaching, Learning & Assessment

Examination (3)	100%
-----------------	------

SUMMARY OF COURSE

This course is exciting, relevant and essential for understanding the changes we face in the 21st century. The course consists of three units:

1. **Living with the physical environment** - the causes, consequences and management of natural hazards such as hurricanes, volcanoes and earthquakes; ecosystems such as tropical rainforests and hot deserts; the UK physical landscapes including coastal and river landscapes.
2. **Challenges in the human environment** - urban issues and challenges including in depth studies about cities in different parts of the world such as Nigeria and the UK; the changing economic world; the challenge of resource management – how are we going to ensure we have sufficient food, water and energy for the future?
3. **Geographical applications** - Issues evaluation: This section contributes a critical thinking and a problem-solving element finding creative solutions to the world's problems. Fieldwork: Over the three years students will carry out both human and physical fieldwork to enable them to develop and apply a range of skills which will be tested in an exam.

You will be helped to develop and demonstrate a range of skills, including cartographic, graphical, numerical, decision making and statistical.

WHAT IT CAN LEAD TO AT COLLEGE AND BEYOND

Geography develops your skills of analysis, investigation and decision making. The skills you will pick up during the course are easily transferable to many walks of life, from planning, environmental work, geology, teaching, park ranger...the list is endless!

EXTRA-CURRICULAR COMMITMENT REQUIREMENTS AND ADDITIONAL INFORMATION

You will be encouraged to attend revision sessions, come on trips to bring to life the geography studied in the classroom and support your progress in geography. Revision guides: Revise AQA GCSE (9-1), geography revision workbook ISBN 978-1-292-13131-3.

FOR MORE INFORMATION, PLEASE CONTACT MISS GUDGEON

AQA HISTORY (8145)



Course Choice Guide

Literacy	*****
Numeracy	*
Communications	*****
Creativity	**
Practical	*
Group Work	****

Teaching, Learning & Assessment

Examination (2)	100%
-----------------	------

Full course details can be found at www.aqa.org.uk/8145

SUMMARY OF COURSE

Within this course you will study:

- **Britain: Health & the People C1000 to present day (thematic study):** This enables you to understand change and continuity across a long sweep of history.
- **Germany 1890 – 1945: Democracy and dictatorship (period study):** This allows you to focus on a substantial and coherent medium time span of at least 50 years.

You will look at two depth studies these enable students to focus on a substantial and coherent short time span, gaining understanding of the complexities of a society or historical situation.

- **Elizabethan England c1568-1603:** This focusses on a particular site in its historical context and enables students to study the relationship between a place and historical events and developments.
- **Conflict and tension between the East and West 1945–1972 (depth study):** This focuses on building upon prior knowledge from an earlier unit and explores the development of international relationships over the course of a short period of time.

WHAT IT CAN LEAD TO AT COLLEGE AND BEYOND

History informs your present and guides your future in every sense: you will learn to weigh up evidence, offer opinion, and communicate informed ideas clearly and confidently, both verbally and in writing; these are skills employers seek greatly.

EXTRA-CURRICULAR COMMITMENT REQUIREMENTS AND ADDITIONAL INFORMATION

You will research and revise independently in addition to the offered revision sessions. You can also take advantage of other enrichment opportunities like trips, university sessions, workshops and guest speakers. You will find the following revision guide useful: New GCSE history AQA revision guide - for the grade 9-1 course CGP books ISBN: 978-1782946045.

FOR MORE INFORMATION, PLEASE CONTACT MISS GUDGEON

EQUAS LEVEL 1/LEVEL 2 HOSPITALITY AND CATERING



Full course details can be found at

<https://www.edugas.co.uk/qualifications/hospitality-and-catering-level-1-2/>

Course Choice Guide

Literacy	****
Numeracy	****
Communications	*****
Creativity	*****
Practical	*****
Group Work	***

Teaching, Learning & Assessment

Examination (90 mins)	40%
Portfolio / Controlled Assessment (9 hours)	60%

SUMMARY OF COURSE

The course has been designed to develop knowledge and understanding related to a range of topics including; hygiene and safety, roles and responsibility of the environmental health officers (EHO), food laws and regulations, food allergies and intolerances. You will also learn about job roles in the hospitality and catering industry as well as the structure of the 'front' and 'back-of-house' in catering establishments.

There is an opportunity to learn about issues related to nutrition and food safety and how they affect successful hospitality and catering operations. In this qualification, you will also develop food preparation and cooking skills as well as the transferable skills of problem solving, organisation, planning, communication and time management.

This course is split into two sections:

- Unit 1: The Hospitality and catering industry (40% of overall grade)
- Unit 2: Hospitality and catering in action (60% of overall grade)

WHAT IT CAN LEAD TO AT COLLEGE AND BEYOND

Successful completion of this qualification could lead to a number of possibilities. There are many local colleges that provide advanced qualifications in food, catering and hospitality e.g. apprenticeships and Level 1-3 courses.

You could progress into careers like a Chef, Dietician, Health and Social care, Food Technologist, Nursing, Food production and Manufacture, Hospitality, Food product development and Childcare.

EXTRA-CURRICULAR COMMITMENT REQUIREMENTS AND ADDITIONAL INFORMATION

You will be responsible for providing ingredients for each practical session and suitable means to take your finished dishes home. There is a trip to Fareham College restaurant.

FOR MORE INFORMATION, PLEASE CONTACT MRS MARSHALL

AQA MODERN FOREIGN LANGUAGES: FRENCH (8658), GERMAN (8668) AND SPANISH (8698)



Full course details can be found at www.aqa.org.uk

SUMMARY OF COURSE

We are in a unique position at Henry Cort, in that we are able to offer a choice of 3 languages at GCSE. You can choose to continue to study French, or you can opt to study German or Spanish from scratch. You will study three main themes at KS4:

Theme 1 - identity and culture, Theme 2 - local, national, international and global areas of interest, Theme 3 - current and future study and employment. These main themes will be divided into sub-themes to allow you to build up your knowledge of vocabulary and grammar. You will study a range of topics including: Family, Free time, Technology, Festivals, Holidays, Health, My Town, Environment, Holidays, School life and Future Plans. You will learn how to speak and write about these topics, and you will be encouraged to express your own thoughts and opinions. Throughout the course, you will prepare your own responses to spoken and written questions, enabling you to communicate effectively in your chosen language. The course is assessed by final exams in 4 skills: Listening, speaking, reading and writing, which all count for 25%.

WHAT IT CAN LEAD TO AT COLLEGE AND BEYOND

Studying a modern foreign language is much more than just an academic subject. It enables you to empathise with and enter into another person's world; to communicate across cultures and to enrich one's own life. It expands your range of thinking and develops effective writing skills in both English and the foreign language. Research shows clear advantages in studying a modern foreign language in terms of cognitive skills and understanding as well as better outcomes in English. Colleges, universities and employers will look favourably on candidates who have studied a foreign language. Career options are varied and include: Journalism, Travel and Tourism, Armed Services, Sales and Marketing, Teaching, Interpreting, and Engineering to name but a few.

EXTRA-CURRICULAR COMMITMENT REQUIREMENTS AND ADDITIONAL INFORMATION

You will be expected to do writing, reading and vocabulary learning tasks after every lesson. GCSE help clinics run after college once a week, or by arrangement with the teacher. There will be revision sessions for listening and reading in Year 11 which you will be expected to attend.

Course Choice Guide

Literacy	*****
Numeracy	*
Communications	*****
Creativity	***
Practical	**
Group Work	**
<u>Teaching, Learning & Assessment</u>	
Examination (4)	100%
Internal assessment	0%

FOR MORE INFORMATION, PLEASE CONTACT MRS WILKS

RSL LEVEL 2 Music Practitioner



Full course details can be found at

<https://www.rslawards.com/vocational/music-practitioners/>

Course Choice Guide

Literacy	****
Numeracy	**
Communications	****
Creativity	*****
Practical	*****
Group Work	****
<u>Teaching, Learning & Assessment</u>	
Internally Assessed NEA	60%
and	
Externally Assessed NEA	40%

SUMMARY OF COURSE

The RSL Level 2 Music Practitioner is a vocational course designed to meet the individual needs of young musicians. The course is delivered over 2 years, with the intention being for students to deliver a performance (the Externally Assessed NEA) at the end of their time at Henry Cort. This isn't just a course for popular musicians – the first unit of Year 10 is a longitudinal piece of work where students must improve their skills on their chosen instrument by setting goals, increasing their repertoire through Instrumental Study; learning to rehearse independently, and reflecting on their success. In addition, their Musical Knowledge will be improved through research, lessons on the importance (and fun-ness) of music theory, and the cultural relevance of all music. Students will need to be able to analyse a piece of music, and understand the component parts by listening.

Finally, the Live Music Performance forms most of Year 11, with a view to students planning and performing at a live event, before reflecting on the experience, and what they hope to achieve as a musician moving forward with their lives

WHAT IT CAN LEAD TO AT COLLEGE AND BEYOND

You can consider A Level music or one of the vocational music/music technology courses now available. In addition, you might wish to study A Level performing arts.

Taking music is often a hugely enjoyable course, and is a great way to build confidence; it's also great for many 'soft-skills', such as public speaking, spatial awareness, independent work and social skills.

EXTRA-CURRICULAR COMMITMENT REQUIREMENTS AND ADDITIONAL INFORMATION

Students are expected to perform, and often. This may involve playing to audiences in class, or at open evenings/ other events in the calendar. Students who find themselves unable to move through their discomfort with performing may be at a disadvantage.

Students will also need to have access to an instrument, and ideally, be able to practice at home.

FOR MORE INFORMATION, PLEASE CONTACT MR CHILCOTT

OCR PHOTOGRAPHY (J173)



Full course details can be found at www.ocr.org.uk

Course Choice Guide

Literacy	***
Numeracy	*
Communications	***
Creativity	*****
Practical	*****
Group Work	
Teaching, Learning & Assessment	
Portfolio	60%
Externally set task	40%

SUMMARY OF COURSE

This is a practical, project-based course designed to enable pupils to explore, acquire and develop skills, knowledge and understanding through traditional and digital photographic techniques. Photography is defined here as the practice of creating durable static or moving images by recording light with light-sensitive materials. Pupils will build a portfolio exploring many aspects of photography, by investigating practical, critical and contextual sources such as the work of historical and contemporary photographers and the different purposes, intentions and functions of photography. You must demonstrate the knowledge, skills and understanding through area(s) of study relevant to photography by creating your own work. This course is suitable for all pupils who have a keen interest in photography who wish to further their creatives and technical skills

You are required to choose one or more area(s) of study:

- Documentary photography
- Photo-journalism
- Studio photography
- Location photography
- Experimental imagery
- Installation
- Moving image: film, video and animation

WHAT IT CAN LEAD TO AT COLLEGE AND BEYOND

Completion of the GCSE in photography will allow you to further your interest through either A level photography or through college based courses. There are also many career opportunities for which a photography background is relevant: Photographer; Advertising; Branding; Photojournalist; Wildlife, Fashion, Events, Sports Photographer, Animator; Web Designer; Illustrator; Film Editor/Director.

The portfolio of work you create in the course is valued by employers and colleges and provides an ideal route into creative courses.

EXTRA-CURRICULAR COMMITMENT REQUIREMENTS AND ADDITIONAL INFORMATION

Photography is time consuming so you must be committed to finishing work in your own time. Your attendance at workshops and completion of homework will be expected regularly.

FOR MORE INFORMATION, PLEASE CONTACT MISS GREENSTREET

OCR TEXTILE DESIGN (J174)*****NB You cannot study this and Fine Art***

Full course details can be found at www.ocr.org.uk

Course Choice Guide

Literacy	***
Numeracy	*
Communications	***
Creativity	*****
Practical	*****
Group Work	
<u>Teaching, Learning & Assessment</u>	
Portfolio	60%
Externally set task	40%

SUMMARY OF COURSE

Textile design is defined here as the creation of designs and products for woven, knitted, stitched or printed fabrics and involves an understanding of fibres, yarns and fabrics. You must explore, acquire and develop skills, knowledge and understanding through the application of techniques and processes specific to your chosen area(s) of study in textile design. You must explore practical and relevant critical and contextual sources such as the work of historical and contemporary textile designers and the different purposes, intentions and functions of textile design as appropriate to their own work. You must demonstrate the knowledge, skills and understanding through area(s) of study relevant to textile design.

You are required to choose one or more area(s) of study:

- Constructed textiles
- Digital textiles
- Dyed fabrics
- Printed fabrics
- Fashion design
- Installed textiles
- Soft furnishings
- Stitched and/or embellished textiles

WHAT IT CAN LEAD TO AT COLLEGE AND BEYOND

Completion of the GCSE in textiles will allow you to further your interest through either A level Textiles or through college based courses. There are also many career options within fashion and textiles ranging from designing and development of textiles products to careers within the fashion industry. The portfolio of work you create in the course is valued by employers and colleges and provides an ideal route into creative courses.

EXTRA-CURRICULAR COMMITMENT REQUIREMENTS AND ADDITIONAL INFORMATION

Textiles is time consuming so you must be committed to finishing work in your own time. Your attendance at workshops and completion of homework will be expected regularly.

FOR MORE INFORMATION, PLEASE CONTACT MRS BALDRY